

Quills 'n' Snouts

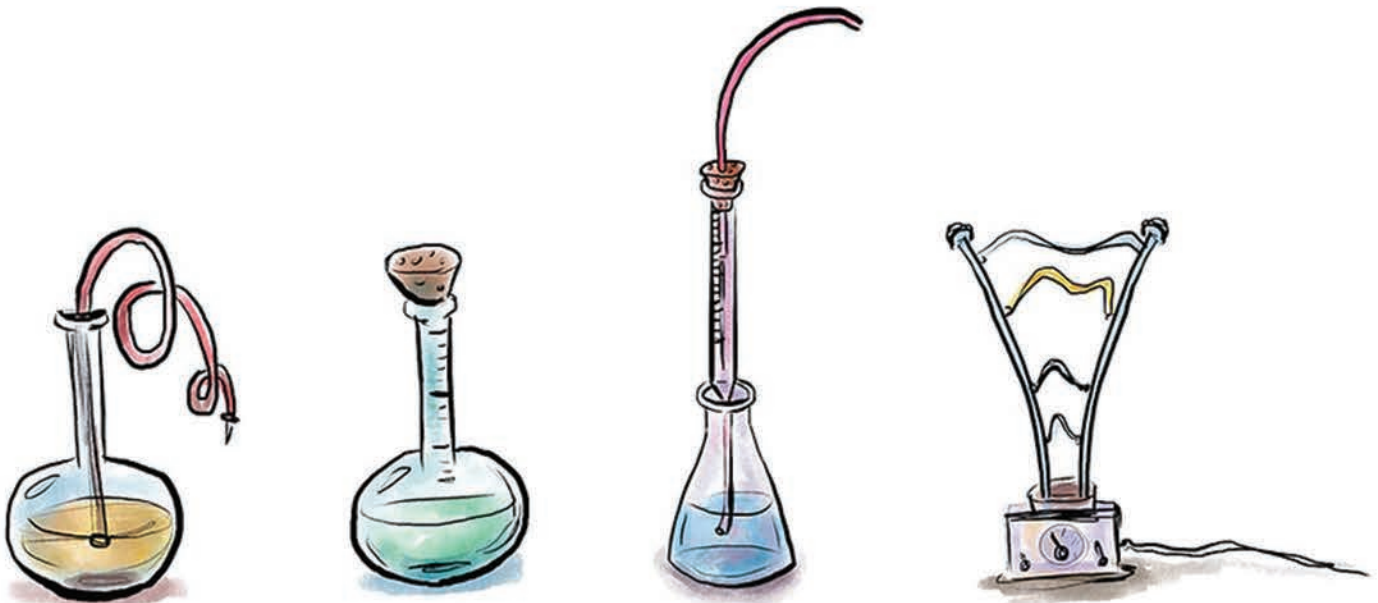
A half-hour animated series for kids ages 6 - 12
(and adults who think they're ages 6 - 12)



created by **Eliza R. Gilliam**

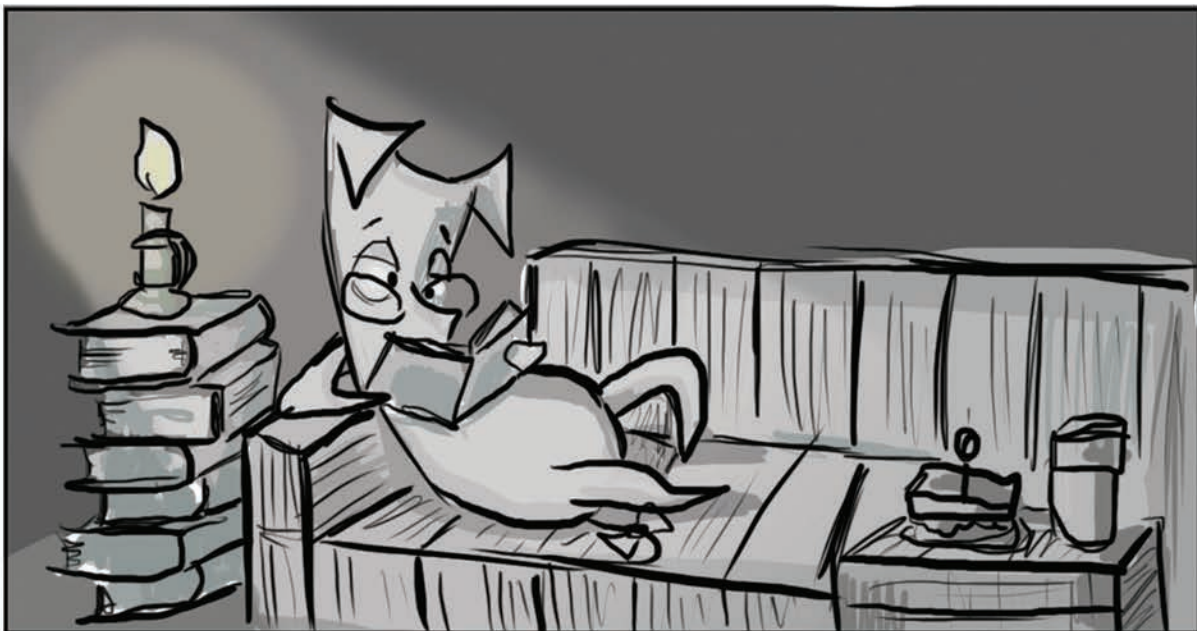


This light-hearted comedy series follows the developing friendship (and occasional rivalry) of two outlier geeky girls in the rural countryside, with dashes of action, *science!*, and cartoon weirdness. Think *Dexter's Laboratory* meets *Gravity Falls* with a touch of *Nancy Drew*.





Penelope ("Penny") Quill, a porcupine, and Abigail ("Abby") Snout, a pig, are the youngest daughters of their respective families, and both live on their families' farms which are a few miles away from town (and from each other). They are introverted, lonely girls (especially Penny, a bookworm) with unusual interests in science and a constantly expanding assortment of interests their families just don't get. After meeting each other in the pilot episode, the girls become friends, teach and challenge each other, hang out at each other's makeshift science labs, deal with their oafish siblings, go on fantastic imaginary adventures, and try to solve problems for adults (sometimes making things worse!) - but they always have fun doing it.



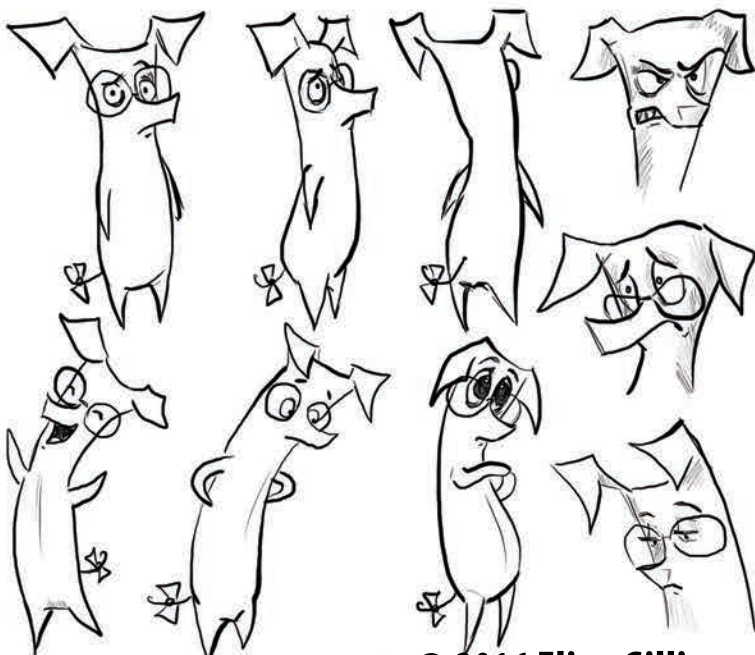
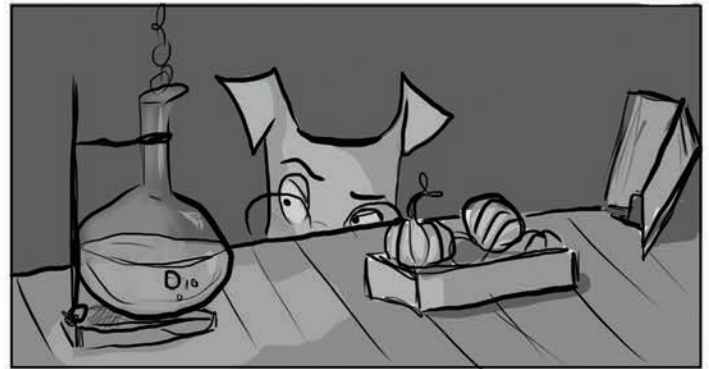
Penny Quill

A porcupine, and the youngest kid in the Quill family. She is extremely bright and optimistic, but is naive and knows most of what she knows from books (of which she has a huge collection, stashed everywhere, including the pumpkin field). Often her siblings make fun of her for ignoring her chores in favor of sitting on top of the pumpkins and reading. She's set up her makeshift biology / chemistry lab in the old garden shed.



Abby Snout

A pig, and the youngest kid in the Snout family. Also a child prodigy, but she's a little bit louder and more "country" and speaks with a thick Southern accent. She likes to talk a lot to anyone who will listen (and some that don't) and will comically use a lot of big words. She plays the banjo and makes up songs about the periodic table with Penny. She likes messing with electricity using motors and wires scavenged from broken farm equipment, in her family's unused silo.



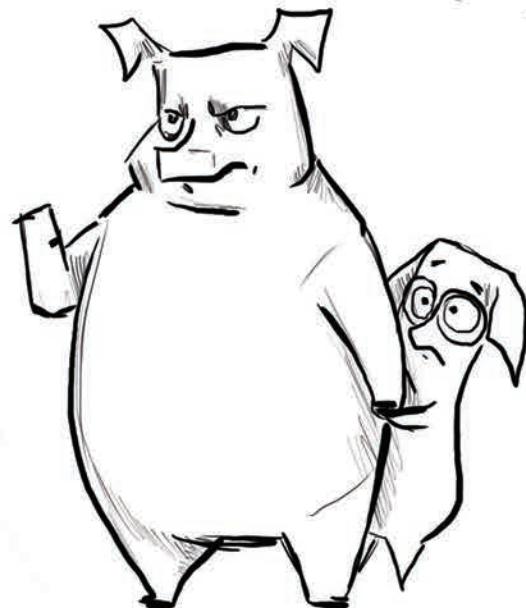
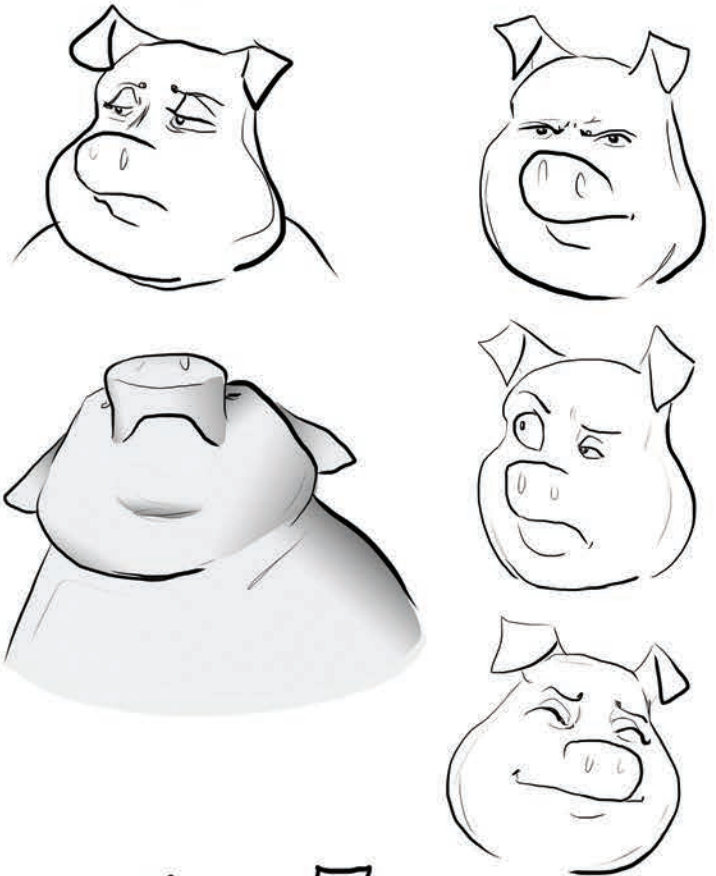
Papa Quill

A hard-working, coverall-wearing traditionalist who takes pride in his work, his family and their long legacy of prize-winning pumpkins. He's puzzled by Abby and her lack of interest in agricultural matters, and is sometimes a bit annoyed when she blows off her chores, but has been known to occasionally to buy a book for her when they're in town.



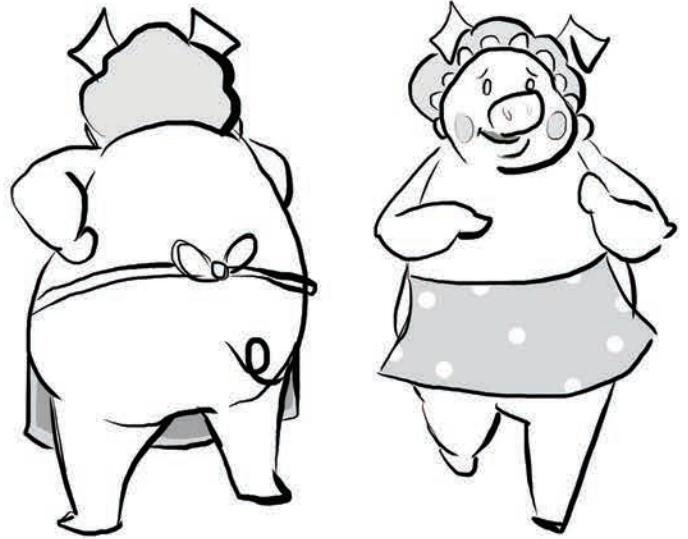
Papa Snout

Moved with his family to the country area recently to provide a better life; also a hard worker with a farm and a boastful, competitive streak. He tries to assimilate his family into the surrounding society as newcomers. He quickly decides that the way to make a big splash is to take the Quills head-on in the pumpkin growing contest, despite having teeny-tiny pumpkins and no experience. After discovering Abby doing electrical experiments, he excitedly gathers up all the small pumpkins and encourages her to use her scientific brain to create a prize-winning pumpkin, and excuses her from most of her chores.



Mama Snout

Sweet, kind, loves to bake, loves to eat what she bakes, and like her husband, becomes as supportive as possible of Abby's efforts. When the time came to extract the pumpkin from the silo, she's the one who operated the crane to pull it out.



Gertrude Goose

As the antagonist of the pilot episode, she is a respected, older goose who has been the head judge of the County Fair's pumpkin growing contest for thirty years. A bit set in her ways, it's funny how seriously she takes the contest (which the Quills have won every single time, until now...) She's *never* seen pumpkins like the ones this year, *certainly* not quivering, mutant sentient pumpkins, which aren't quite *proper*, but she allows the contest to proceed. When the pumpkins explode, she gets agitated and declares that next year's contest will be strictly a pumpkin *pie* contest, while at the same time admitting that this year's pumpkins are the tastiest pumpkins she's ever experienced.

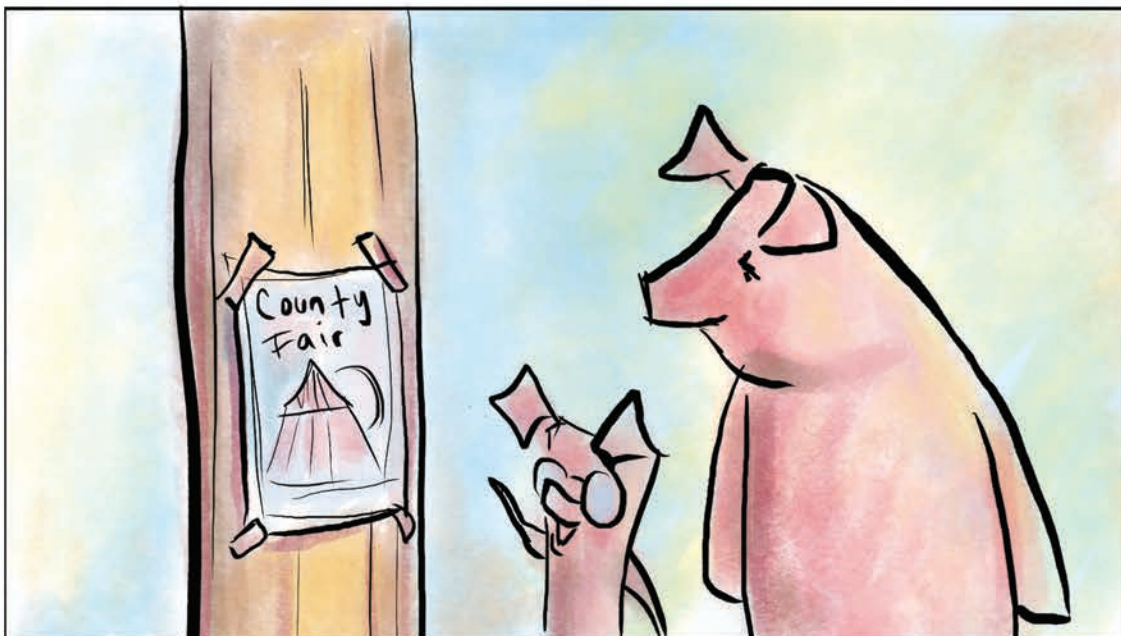


Pilot Episode: The Great Pumpkin Showdown

Our show begins at the Quill farm, where the Quills, a family of porcupines, have been growing pumpkins for generations and have always won first place at the County Fair for their huge prize pumpkins. Penny Quill, the youngest child, hangs out in her own little makeshift science lab a lot and doesn't seem interested in what the rest of the family is constantly talking about, but can't make herself heard at the dinner table and feels left out a lot.



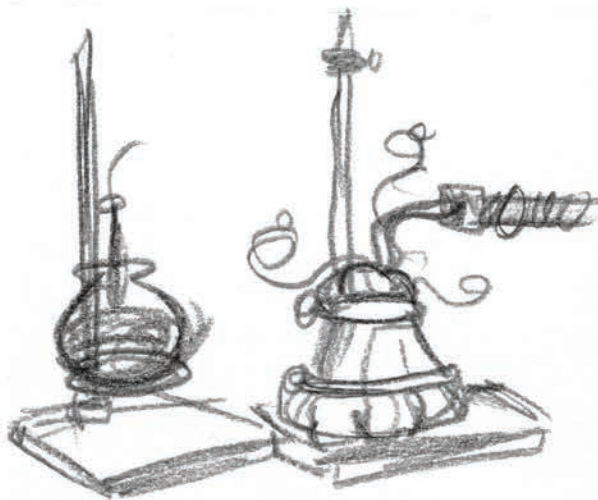
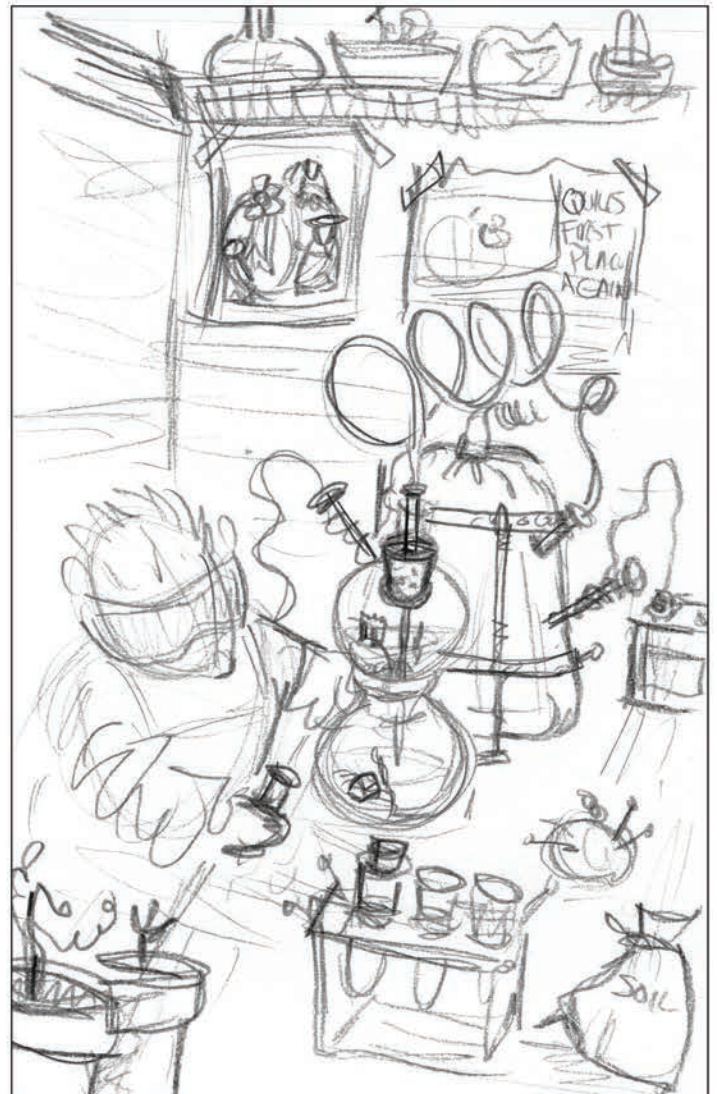
One day the Quills hear about a new family in town, the Snouts, who are planning to grow their own tremendous pumpkins to enter the contest.

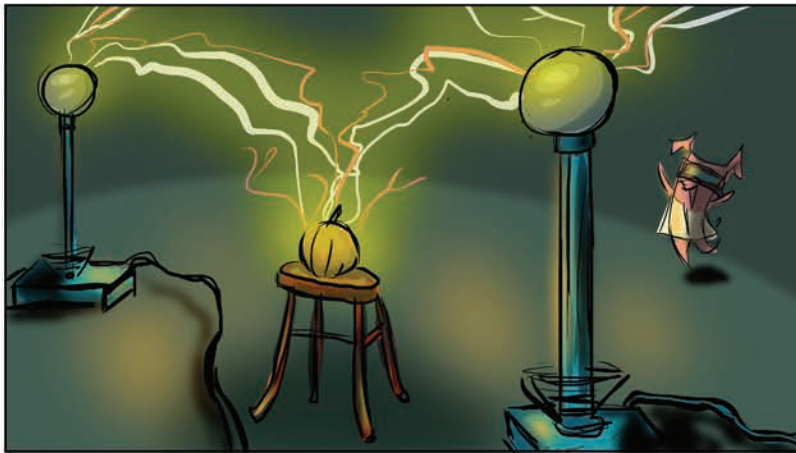
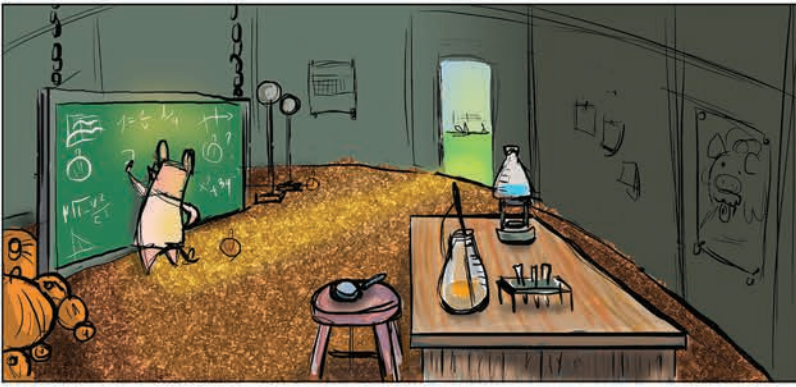




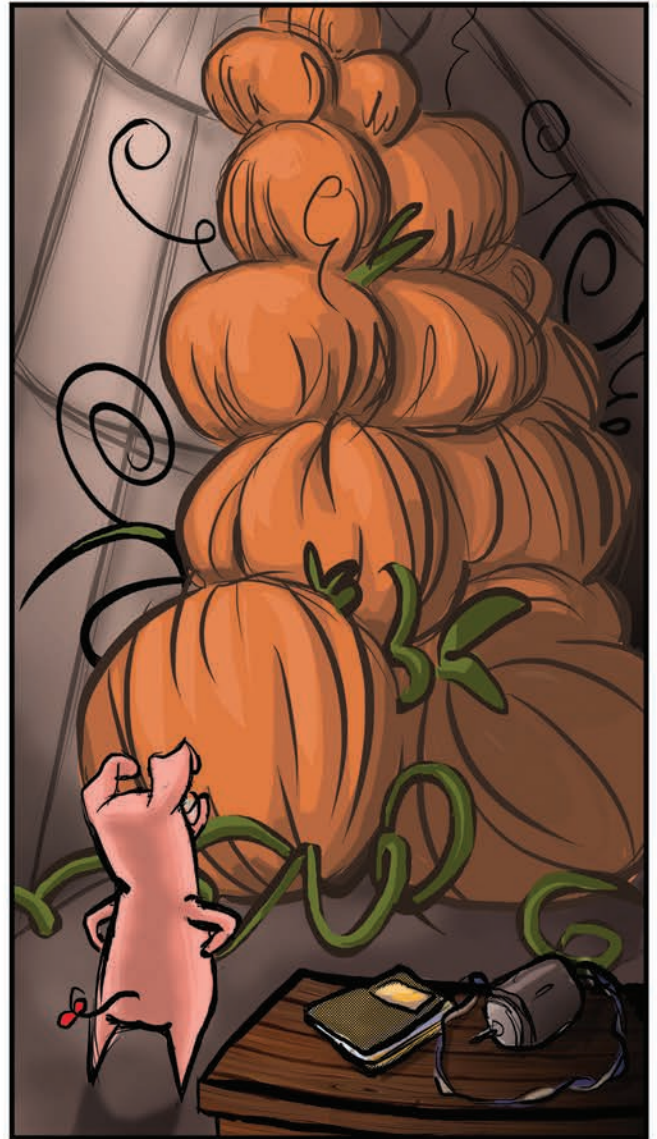
The rumors about the Snouts' pumpkins get more and more ridiculous. Papa Quill can't let their family be upstaged by some newcomers' pumpkin! Unsure what to do, they argue over the dinner table until Penny pipes up. She can grow an extra-huge pumpkin with *science!*

Unknown to her, Abby Snout is across town doing the same thing...





The action switches between Penny's makeshift chemical/biological lab and Abby's electrical gizmos in her own lab, and over a couple of months, both pumpkins get ridiculously, monstrously big, mutated, misshapen, and possibly sentient.





It's County Fair day! Both families drag their pumpkins miles to the fair with great difficulty.

When the Big Reveal happens, the audience gasps. What the heck *are* those two big weird things?



The bewildered judge, Gertrude Goose, doesn't know what to make of this. Then the pumpkins start bumping each other, and fighting each other with their tendrils. Both pumpkins leap high into the sky and fight to the finish until they both explode! Chunks and bits of pumpkin fall all over the audience and the judge. She gets some on her beak, which she tastes and determines that it's delicious. But she's going to declare no winner this year, and in the future there will only be a pumpkin *pie* contest, and not a pumpkin growing contest!



Dejected, Papa Quill and Papa Snout are both disappointed in this outcome, but Penny and Abby finally meet each other and are amazed that there's another girl in town like themselves. They awkwardly hug and we know they're going to have many great adventures together!

Suggested Future Episodes

Cave of Blunders: Penny and Abby find an old map that leads them to a cave, where they encounter the scary Troglobites. Can they escape?

Car Wars: Penny and Abby enter a Go-Kart race with their own self-driving creation. But they weren't expecting some of the other players to cheat...

The Contraption: When both the Quills and the Snouts farms have a pest problem, the girls create a Rube Goldberg machine and it goes out of control!

A Blast from the Past: Grandma and Grandpa Quill come to visit, and when they see Penny's lab, Penny learns something about their amazing past she never knew before: Grandpa was a pilot, and Grandma had once operated huge crazy antique vacuum tube radios from a submarine.

When Life Gives You Lemons: Abby builds a contraption to accelerate the process of making lemonade so she can out-sell Penny by volume, while Penny painstakingly uses all of her chemical knowledge to perfect the taste of her lemonade. They compete to see who can sell the most.